



## THE ADRIANA at VOLUSIA/FLAGLER OFFSITE

THE ADRIANA - CRAFTSMAN

**5 Bedrooms • 3.5 Bathrooms • 2-Car Garage • 3,490 ft<sup>2</sup> Living Area • 4,256 ft<sup>2</sup> Under Roof**

Welcome home to the Adriana! This versatile two-story layout offers 3,490 square feet, five bedrooms, 3.5 baths, plus a game and media room—ideal for family life or entertaining. The open-concept first floor features a deluxe kitchen with a large island, flowing into the dining and living rooms, all overlooking a covered lanai perfect for outdoor gatherings. Retreat to the spacious first-floor master suite with a luxurious ensuite bath and walk-in closet. Upstairs, four more bedrooms, each with a walk-in closet, surround a game room and cozy media room. And with ICI Homes' customization options, you can adjust walls, add special touches, and design the Adriana to perfectly match your lifestyle.

\* Renderings may vary from actual home. Please see disclaimer for more details.

**\$1,791**

**ESTIMATED SAVINGS**



This home has a HERS Score of 56 and is estimated to save you \$3,328 on your annual utility bills vs. a resale home.

# THE ADRIANA

5 Bedrooms • 3.5 Bathrooms • 2-Car Garage

Volusia/Flagler

Offsite Available In  
Ormond Beach, FL Volusia Flagler On Your Lot

Living Area: 3,490 ft<sup>2</sup> Under Roof: 4,256 ft<sup>2</sup>

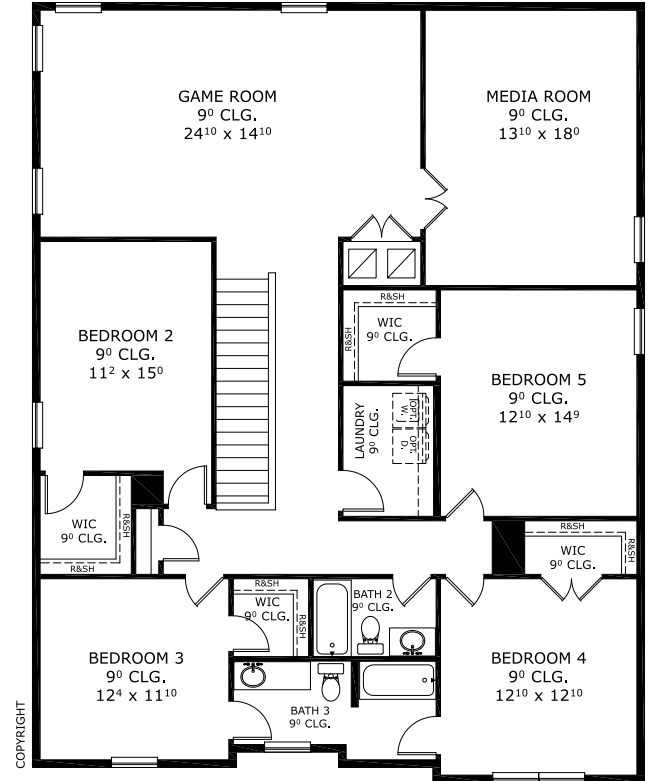
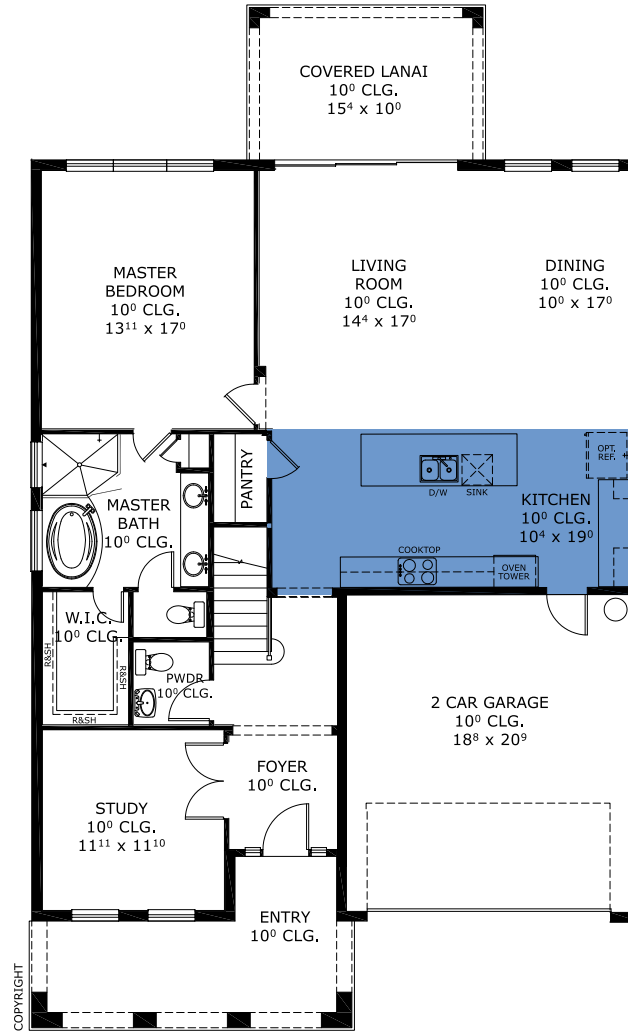
## THE WEST INDIES



## THE COASTAL MODERN



## FIRST-SECOND FLOOR



Customize this plan, it's easy! (844) 349-6401 or visit [ICIHomes.com](http://ICIHomes.com)

©1994-2026 ICI Homes™ is a registered trademark whose divisions operate under CBC1267313, CBC1262114, CBC1262120, CBC1264300, CBC1265743, CRC1333091, and CBC1257263. Features may be plan specific and vary. Please consult a Sales Associate for specific feature information. All new ICI Homes come with a HBW 2-10 warranty. Certain elevations may have additional fees. Prices may not include lot premiums, upgrades, and options. Inventory home completion date may vary. All prices subject to change without notice. All plans are property of ICI Homes and cannot be copied or used without permission. Prices, promotions, incentives, features, options, amenities, floor plans, elevations, site maps, designs, materials, and dimensions are for illustrative purposes only and subject to change without notice. Plans should not be relied upon as representation express or implied of final sizes, locations, features or dimensions. Square footage and dimensions are estimated and may vary from description. All HERS ratings and savings are calculated by a third party energy rating service. Actual savings will depend on a number of factors, including but not limited to daily activities, home maintenance practices, household size, use of appliances, lighting and internal climate control systems, lot orientation, and surrounding climate and weather conditions. Created on 06/23/2026: Garage Orientation R / L: \_\_\_\_\_

