



THE BRADDOCK at SEVEN PINES

THE BRADDOCK - CRAFTSMAN

QUICK MOVE IN

4 Bedrooms • 3.5 Bathrooms • 3-Car Garage • 3,106 ft² Living Area • 4,394 ft² Under Roof

The Braddock is a 3,077 sq. ft. home designed for modern living with 4 bedrooms, 3.5 baths, and a three-car garage. The heart of the home is a two-story living room that flows into a chef's kitchen and breakfast nook, with a covered lanai for outdoor enjoyment. The main-floor master suite offers a luxurious retreat with two walk-in closets and a spa-like bath. Upstairs, three additional bedrooms ensure privacy for family and guests. With ICI Homes' customization options, the Braddock can be tailored to fit your lifestyle, making it a home that's uniquely yours.

* Renderings may vary from actual home. Please see disclaimer for more details.

\$1,689

ESTIMATED SAVINGS



This home has a HERS Score of 65 and is estimated to save you \$3,150 on your annual utility bills vs. a resale home.

THE BRADDOCK

4 Bedrooms • 3.5 Bathrooms • 3-Car Garage

QUICK MOVE IN

Seven Pines

Elite Series | 60' Wide Lots | Rear Load - Lot 262

5544 Woodgate Avenue
Jacksonville, FL, 32224

Living Area: 3,106 ft²

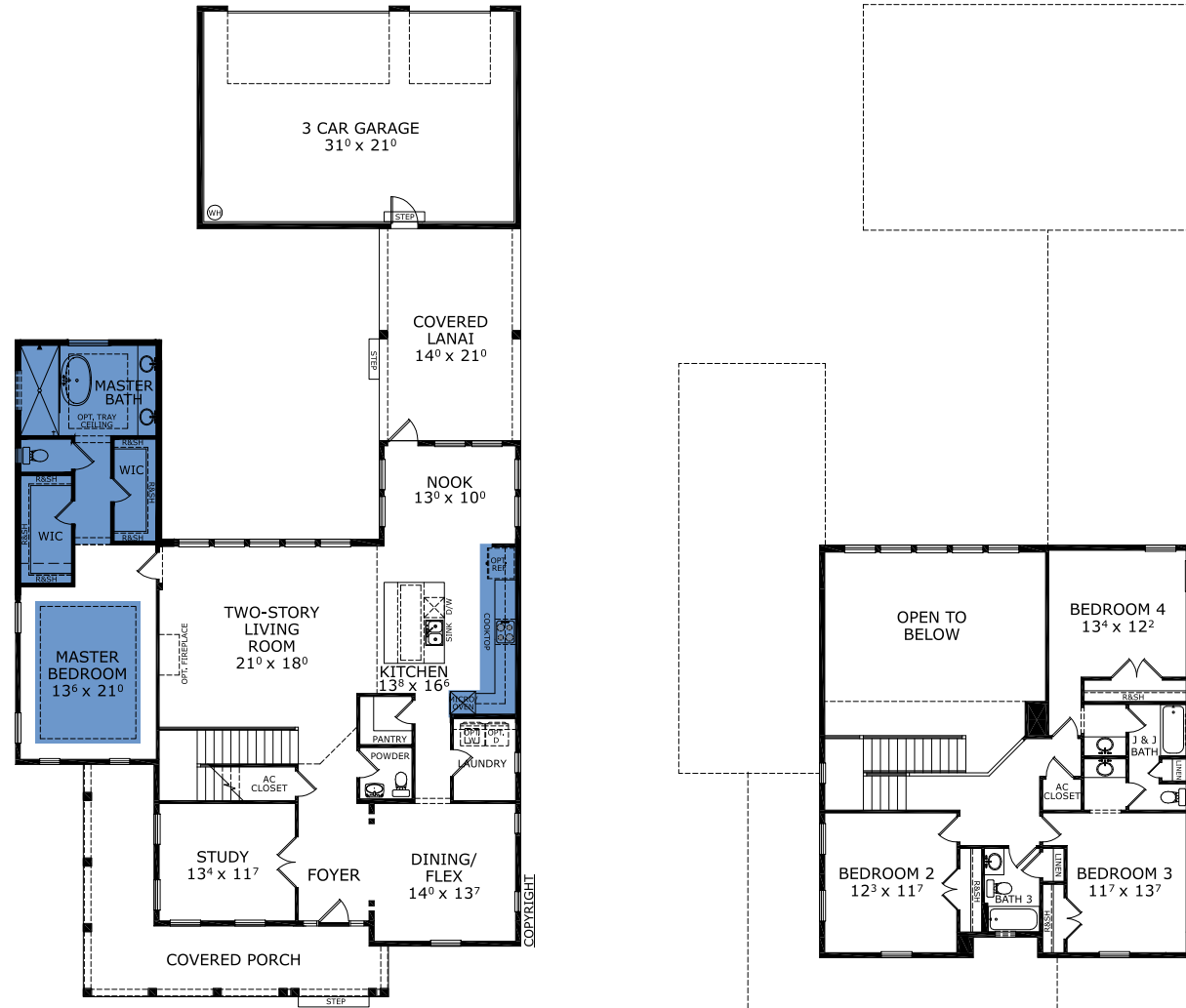
Structural Options Included in This Home:

- ✓ Shower ilo Guest Tub @ Bath Alt
- ✓ Deluxe Master Bath 1
- ✓ Kitchen Deluxe - NFD
- ✓ Tray Ceiling - Living Room
- ✓ Tray Ceiling - Master Suite
- ✓ Outlet-Floor Plug Brass

And much more....

Priced at: **\$1,076,535**

FIRST-SECOND FLOOR



This Braddock is a Quick Move In! [Speak to a Sales Counselor \(844\) 349-6401](https://www.icihomes.com) or visit [ICIHomes.com](https://www.icihomes.com)

©1994-2026 ICI Homes™ is a registered trademark whose divisions operate under CBC1267313, CBC1262114, CBC1262120, CBC1264300, CBC1265743, CRC1333091, and CBC1257263. Features may be plan specific and vary. Please consult a Sales Associate for specific feature information. All new ICI Homes come with a HBW 2-10 warranty. Certain elevations may have additional fees. Prices may not include lot premiums, upgrades, and options. Inventory home completion date may vary. All prices subject to change without notice. All plans are property of ICI Homes and cannot be copied or used without permission. Prices, promotions, incentives, features, options, amenities, floor plans, elevations, site maps, designs, materials, and dimensions are for illustrative purposes only and subject to change without notice. Plans should not be relied upon as representation express or implied of final sizes, locations, features or dimensions. Square footage and dimensions are estimated and may vary from description. All HERS ratings and savings are calculated by a third party energy rating service. Actual savings will depend on a number of factors, including but not limited to daily activities, home maintenance practices, household size, use of appliances, lighting and internal climate control systems, lot orientation, and surrounding climate and weather conditions. Created on 06/23/2026: Garage Orientation R / L: _____

