



## THE BROOKLYN at OAKMONT

THE BROOKLYN - WEST INDIES

QUICK MOVE IN

**4 Bedrooms • 3.5 Bathrooms • 3-Car Garage • 3,234 ft<sup>2</sup> Living Area • 4,580 ft<sup>2</sup> Under Roof**

Step into the Brooklyn, a versatile home with over 3,000 sqft of living space designed to bring comfort, style, and functionality to everyday living. This stunning two-story layout offers 4 bedrooms, 3 and a half bathrooms, and a three-car garage, making it ideal for families who need space and flexibility. With open-concept living areas, private retreats, and plenty of room for entertaining, the Brooklyn can easily adapt to your lifestyle. ICI Homes' commitment to customization means you can personalize the Brooklyn to truly make it your own.

\* Renderings may vary from actual home. Please see disclaimer for more details.

**\$1,497**

ESTIMATED SAVINGS



This home has a HERS Score of 64 and is estimated to save you \$3,193 on your annual utility bills vs. a resale home.

# THE BROOKLYN

4 Bedrooms • 3.5 Bathrooms • 3-Car Garage

QUICK MOVE IN

## Oakmont

Elite Series | 65' Wide Lots - Lot 626

3658 SW 120th Drive  
Gainesville, FL, 32608

Living Area: 3,234 ft<sup>2</sup>

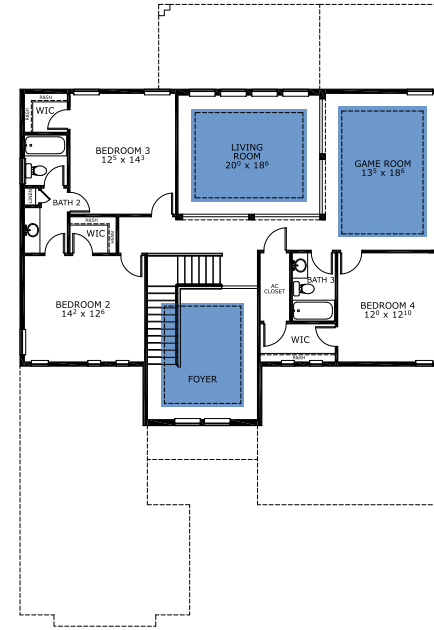
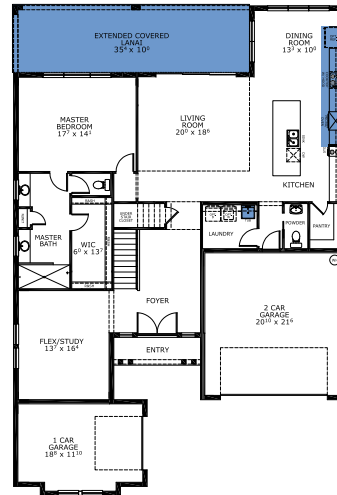
### Structural Options Included in This Home:

- ✓ Kitchen Deluxe - NFD
- ✓ Extended Covered Lanai
- ✓ Summer Kitchen-Knee Wall Only per LF
- ✓ Tray Ceiling - Game Room
- ✓ Tray Ceiling - Foyer
- ✓ Tray Ceiling - Living Room
- ✓ Outlet-Floor Plug Brass
- ✓ Railing ilo Knee Wall
- ✓ Sink-Rough In

And much more....

Priced at: **\$952,051**

## FIRST-SECOND FLOOR



This Brooklyn is a Quick Move In! [Speak to a Sales Counselor \(844\) 349-6401](https://www.icihomes.com) or visit [ICIHomes.com](https://www.icihomes.com)

©1994-2026 ICI Homes™ is a registered trademark whose divisions operate under CBC1267313, CBC1262114, CBC1262120, CBC1264300, CBC1265743, CRC1333091, and CBC1257263. Features may be plan specific and vary. Please consult a Sales Associate for specific feature information. All new ICI Homes come with a HBW 2-10 warranty. Certain elevations may have additional fees. Prices may not include lot premiums, upgrades, and options. Inventory home completion date may vary. All prices subject to change without notice. All plans are property of ICI Homes and cannot be copied or used without permission. Prices, promotions, incentives, features, options, amenities, floor plans, elevations, site maps, designs, materials, and dimensions are for illustrative purposes only and subject to change without notice. Plans should not be relied upon as representation express or implied of final sizes, locations, features or dimensions. Square footage and dimensions are estimated and may vary from description. All HERS ratings and savings are calculated by a third party energy rating service. Actual savings will depend on a number of factors, including but not limited to daily activities, home maintenance practices, household size, use of appliances, lighting and internal climate control systems, lot orientation, and surrounding climate and weather conditions. Created on 06/24/2026: \_\_\_\_\_ Garage Orientation R / L: \_\_\_\_\_

