



## THE BRECKENRIDGE at SILVERLEAF

THE BRECKENRIDGE - COASTAL

**4 Bedrooms • 4.5 Bathrooms • 3-Car Garage • 3,999 ft<sup>2</sup> Living Area • 5,188 ft<sup>2</sup> Under Roof**

The Breckenridge is an elegant and functional home with open living and endless customization options available. With its two-story foyer and gourmet kitchen, it is perfect for modern living and entertainment.

\* Renderings may vary from actual home. Please see disclaimer for more details.

# \$2,102

**ESTIMATED SAVINGS**



This home has a HERS Score of 63 and is estimated to save you \$4,070 on your annual utility bills vs. a resale home.

# THE BRECKENRIDGE

4 Bedrooms • 4.5 Bathrooms • 3-Car Garage

**Silverleaf** Available In  
St. Augustine, FL Silverleaf 80

**Living Area:** 3,999 ft<sup>2</sup> **Under Roof:** 5,188 ft<sup>2</sup>

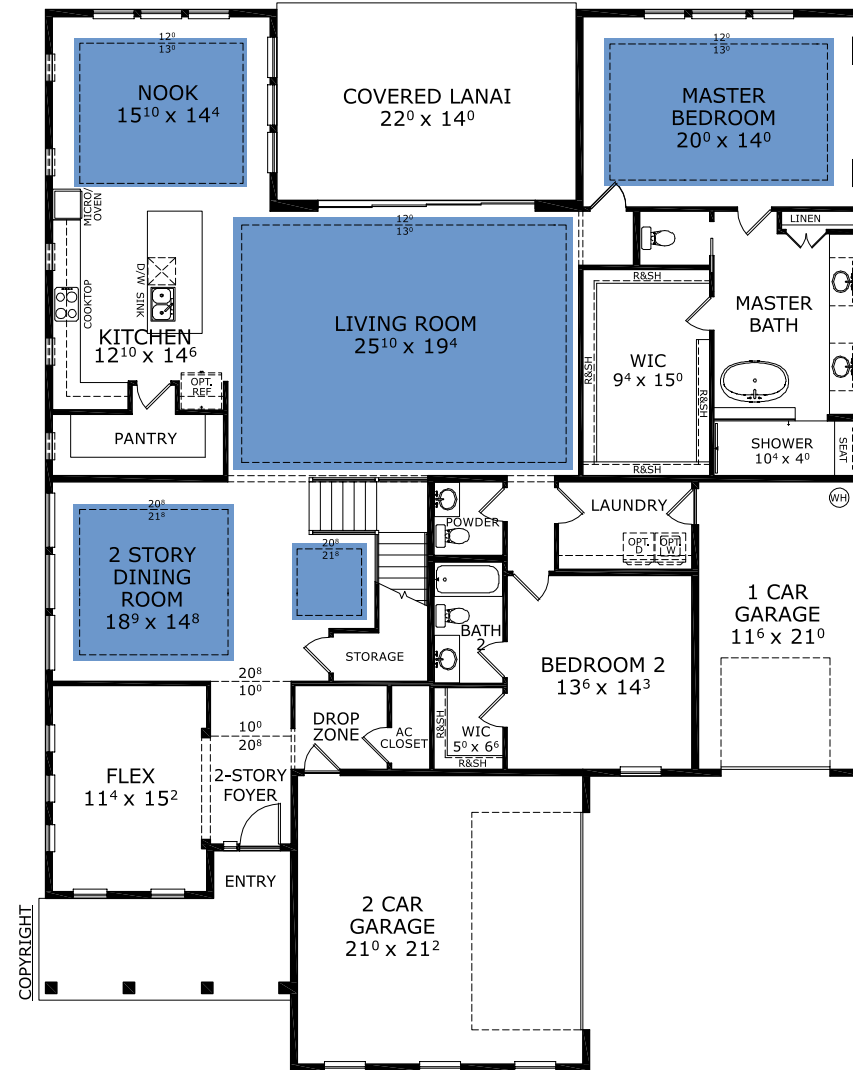
THE FARMHOUSE



THE WEST INDIES



## FIRST FLOOR



**Customize this plan, it's easy! (844) 349-6401 or visit [ICIHomes.com](https://www.ICIHomes.com)**

©1994-2026 ICI Homes™ is a registered trademark whose divisions operate under CBC1267313, CBC1262114, CBC1262120, CBC1264300, CBC1265743, CRC1333091, and CBC1257263. Features may be plan specific and vary. Please consult a Sales Associate for specific feature information. All new ICI Homes come with a HBW 2-10 warranty. Certain elevations may have additional fees. Prices may not include lot premiums, upgrades, and options. Inventory home completion date may vary. All prices subject to change without notice. All plans are property of ICI Homes and cannot be copied or used without permission. Prices, promotions, incentives, features, options, amenities, floor plans, elevations, site maps, designs, materials, and dimensions are for illustrative purposes only and subject to change without notice. Plans should not be relied upon as representation express or implied of final sizes, locations, features or dimensions. Square footage and dimensions are estimated and may vary from description. All HERS ratings and savings are calculated by a third party energy rating service. Actual savings will depend on a number of factors, including but not limited to daily activities, home maintenance practices, household size, use of appliances, lighting and internal climate control systems, lot orientation, and surrounding climate and weather conditions. Created on 06/23/2026: \_\_\_\_\_ Garage Orientation R / L: \_\_\_\_\_



# THE BRECKENRIDGE

4 Bedrooms • 4.5 Bathrooms • 3-Car Garage

**Silverleaf** Available In  
St. Augustine, FL Silverleaf 80

**Living Area:** 3,999 ft<sup>2</sup> **Under Roof:** 5,188 ft<sup>2</sup>

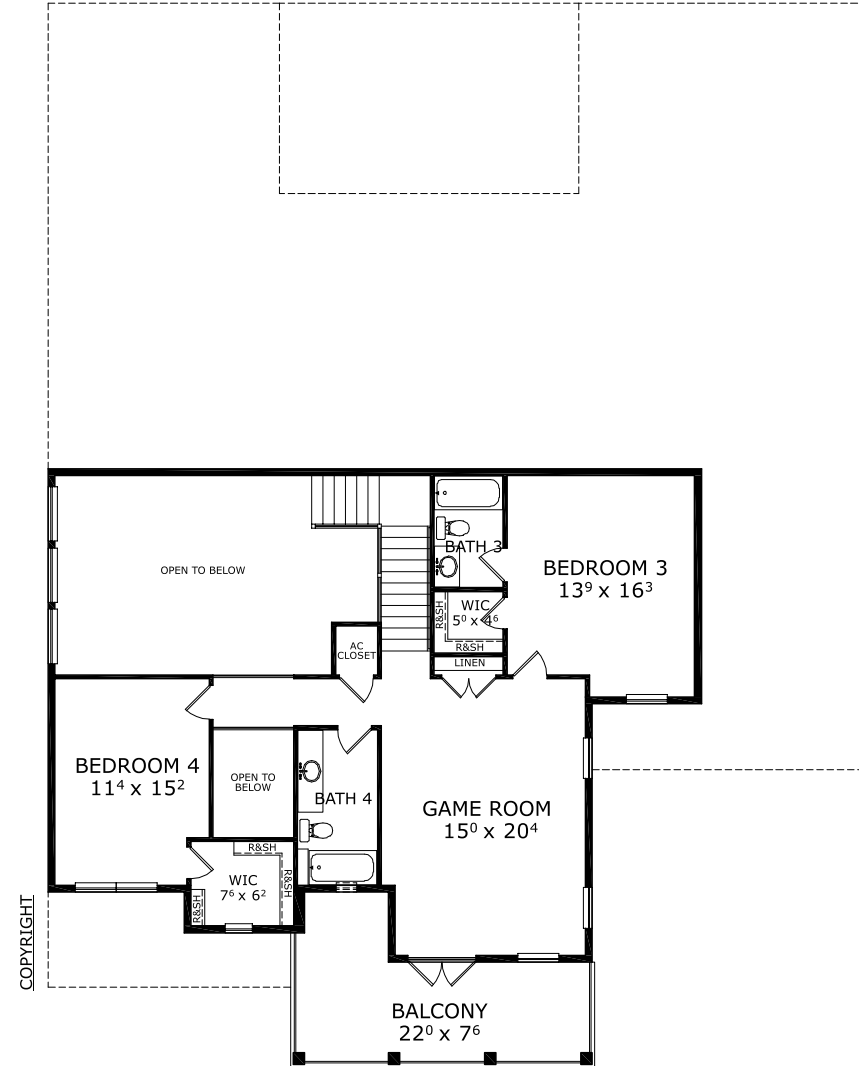
## THE FARMHOUSE



## THE WEST INDIES



## SECOND FLOOR



**Customize this plan, it's easy! (844) 349-6401 or visit ICIHomes.com**

©1994-2026 ICI Homes™ is a registered trademark whose divisions operate under CBC1267313, CBC1262114, CBC1262120, CBC1264300, CBC1265743, CRC1333091, and CBC1257263. Features may be plan specific and vary. Please consult a Sales Associate for specific feature information. All new ICI Homes come with a HBW 2-10 warranty. Certain elevations may have additional fees. Prices may not include lot premiums, upgrades, and options. Inventory home completion date may vary. All prices subject to change without notice. All plans are property of ICI Homes and cannot be copied or used without permission. Prices, promotions, incentives, features, options, amenities, floor plans, elevations, site maps, designs, materials, and dimensions are for illustrative purposes only and subject to change without notice. Plans should not be relied upon as representation express or implied of final sizes, locations, features or dimensions. Square footage and dimensions are estimated and may vary from description. All HERS ratings and savings are calculated by a third party energy rating service. Actual savings will depend on a number of factors, including but not limited to daily activities, home maintenance practices, household size, use of appliances, lighting and internal climate control systems, lot orientation, and surrounding climate and weather conditions. Created on 06/23/2026: Garage Orientation R / L: \_\_\_\_\_

