



## THE COZUMEL at OAKMONT

THE COASTAL

**3 Bedrooms • 3 Bathrooms • 2-Car Garage • 2,307 ft<sup>2</sup> Living Area • 3,031 ft<sup>2</sup> Under Roof**

The Cozumel is a two-story home with 2,307 square feet of inviting, flexible living space. An open-concept main floor connects the living room, dining area, and Kitchen Deluxe with island options, creating a seamless flow that's perfect for gatherings. A cozy flex room near the entrance offers versatility as a home office or guest room. Upstairs, the private master suite features a walk-in closet and en-suite bath, while two additional bedrooms and a laundry room add convenience. With ICI Homes' customization options, the Cozumel is designed to fit your unique lifestyle and preferences, making it a place you'll love to call home.

\* Renderings may vary from actual home. Please see disclaimer for more details.

**\$1,387**

**ESTIMATED SAVINGS**



This home has a HERS Score of 60 and is estimated to save you \$2,860 on your annual utility bills vs. a resale home.

# THE COZUMEL

3 Bedrooms • 3 Bathrooms • 2-Car Garage

**Oakmont** Available In  
Gainesville, FL Oakmont 50 RL

Living Area: 2,307 ft<sup>2</sup> Under Roof: 3,031 ft<sup>2</sup>

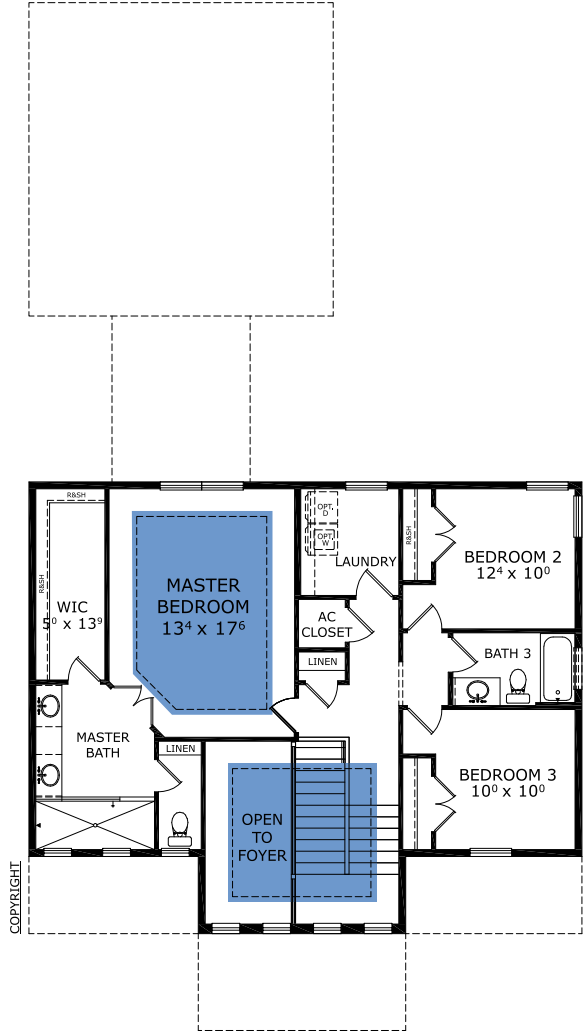
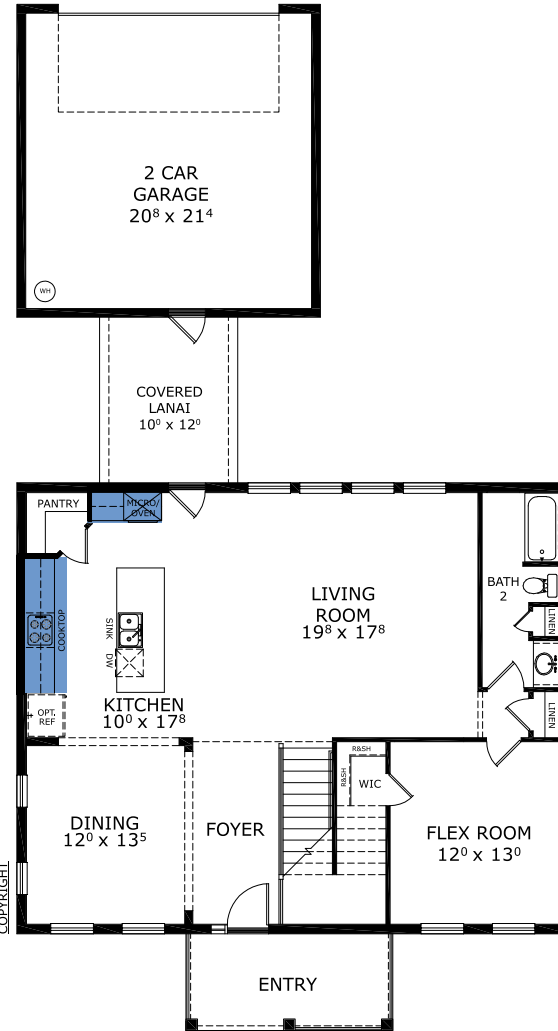
## THE FARMHOUSE



## THE CRAFTSMAN



## FIRST-SECOND FLOOR



Customize this plan, it's easy! (844) 349-6401 or visit [ICIHomes.com](http://ICIHomes.com)

©1994-2026 ICI Homes™ is a registered trademark whose divisions operate under CBC1267313, CBC1262114, CBC1262120, CBC1264300, CBC1265743, CRC1333091, and CBC1257263. Features may be plan specific and vary. Please consult a Sales Associate for specific feature information. All new ICI Homes come with a HBW 2-10 warranty. Certain elevations may have additional fees. Prices may not include lot premiums, upgrades, and options. Inventory home completion date may vary. All prices subject to change without notice. All plans are property of ICI Homes and cannot be copied or used without permission. Prices, promotions, incentives, features, options, amenities, floor plans, elevations, site maps, designs, materials, and dimensions are for illustrative purposes only and subject to change without notice. Plans should not be relied upon as representation express or implied of final sizes, locations, features or dimensions. Square footage and dimensions are estimated and may vary from description. All HERS ratings and savings are calculated by a third party energy rating service. Actual savings will depend on a number of factors, including but not limited to daily activities, home maintenance practices, household size, use of appliances, lighting and internal climate control systems, lot orientation, and surrounding climate and weather conditions. Created on 06/23/2026: Garage Orientation R / L: \_\_\_\_\_

