



THE EGRET V at OAKMONT

THE MOUNTAIN COASTAL

4 Bedrooms • 3 Bathrooms • 2-Car Garage • 3,067 ft² Living Area • 4,189 ft² Under Roof

The Egret V is a 3,067-square-foot haven featuring four bedrooms and three baths, designed for both elegance and functionality. Its spacious living room with 12-foot ceilings flows seamlessly into the dining area and deluxe kitchen, making it perfect for entertaining. The master suite is a luxurious retreat with dual walk-in closets and a spa-like bath. Enjoy the Florida lifestyle on your expansive covered lanai, perfect for year-round relaxation. With ICI Homes' renowned customization, you can adapt the Egret V to suit your needs—from additional bedrooms to a guest suite, we make your vision a reality.

* Renderings may vary from actual home. Please see disclaimer for more details.

\$1,566

ESTIMATED SAVINGS



This home has a HERS Score of 59 and is estimated to save you \$3,010 on your annual utility bills vs. a resale home.

THE EGRET V

4 Bedrooms • 3 Bathrooms • 2-Car Garage

Oakmont
Gainesville, FL

Available In
Oakmont 80

Living Area: 3,067 ft² **Under Roof:** 4,189 ft²

THE FARMHOUSE - CR



THE CRAFTSMAN II



THE COASTAL II



THE CRAFTSMAN II - CR



THE WEST INDIES - CR



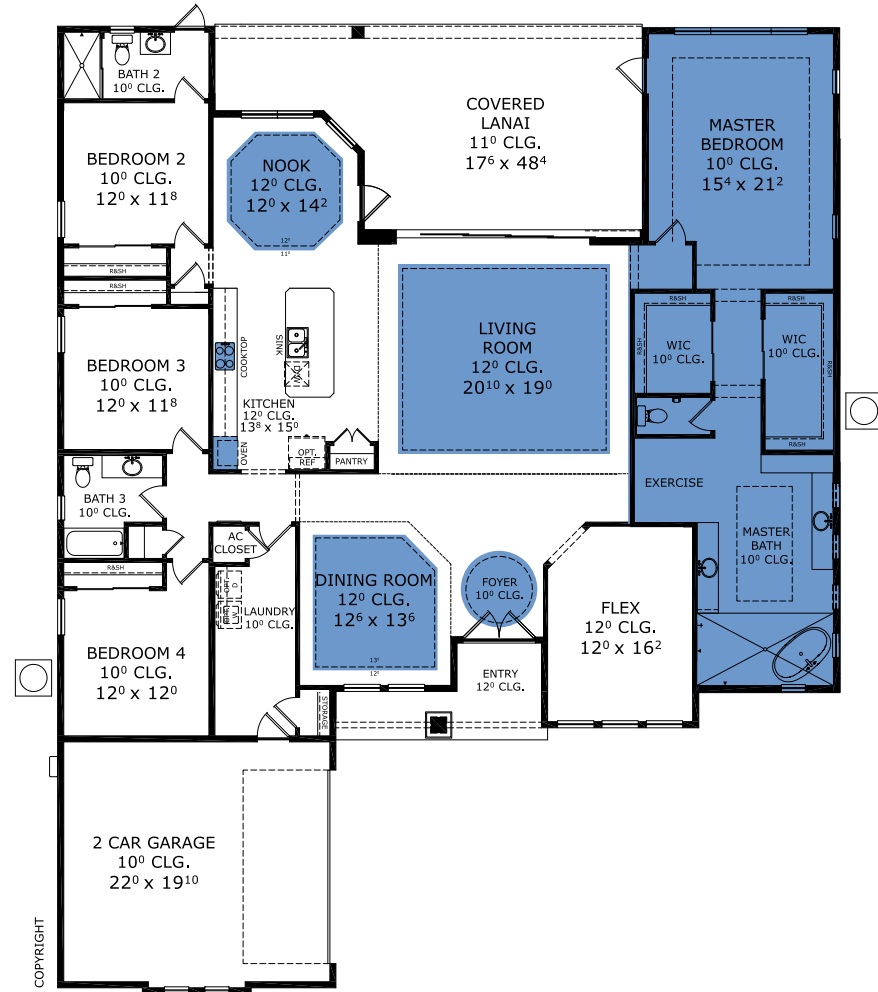
THE MODERN II



THE MODERN - SIDING



FIRST FLOOR



Customize this plan, it's easy! (844) 349-6401 or visit [ICIHomes.com](https://www.ICIHomes.com)

©1994-2026 ICI Homes™ is a registered trademark whose divisions operate under CBC1267313, CBC1262114, CBC1262120, CBC1264300, CBC1265743, CRC1333091, and CBC1257263. Features may be plan specific and vary. Please consult a Sales Associate for specific feature information. All new ICI Homes come with a HBW 2-10 warranty. Certain elevations may have additional fees. Prices may not include lot premiums, upgrades, and options. Inventory home completion date may vary. All prices subject to change without notice. All plans are property of ICI Homes and cannot be copied or used without permission. Prices, promotions, incentives, features, options, amenities, floor plans, elevations, site maps, designs, materials, and dimensions are for illustrative purposes only and subject to change without notice. Plans should not be relied upon as representation express or implied of final sizes, locations, features or dimensions. Square footage and dimensions are estimated and may vary from description. All HERS ratings and savings are calculated by a third party energy rating service. Actual savings will depend on a number of factors, including but not limited to daily activities, home maintenance practices, household size, use of appliances, lighting and internal climate control systems, lot orientation, and surrounding climate and weather conditions. Created on 06/23/2026: Garage Orientation R / L: _____

