



THE JULIETTE at OAKMONT

THE JULIETTE - VERNACULAR

3 Bedrooms • 2 Bathrooms • 2-Car Garage • 1,976 ft² Living Area • 2,611 ft² Under Roof

The Juliette floor plan combines style and function in 1,976 square feet. This single-story home offers three bedrooms, two baths, and a versatile flex room. The open-concept living area includes a gourmet kitchen, dining room, and spacious living room, all enhanced by elegant tray ceilings. The private master suite features a luxurious bath and large walk-in closet. Two additional bedrooms offer space for family or guests. Enjoy outdoor living on the covered lanai, with options to extend the space. With ICI Homes' customization options, the Juliette can be tailored to fit your lifestyle.

* Renderings may vary from actual home. Please see disclaimer for more details.

\$1,088

ESTIMATED SAVINGS



This home has a HERS Score of 58 and is estimated to save you \$2,223 on your annual utility bills vs. a resale home.

THE JULIETTE

3 Bedrooms • 2 Bathrooms • 2-Car Garage

Oakmont
Gainesville, FL

Available In
Oakmont 65

Living Area: 1,976 ft² **Under Roof:** 2,611 ft²

THE FARMHOUSE



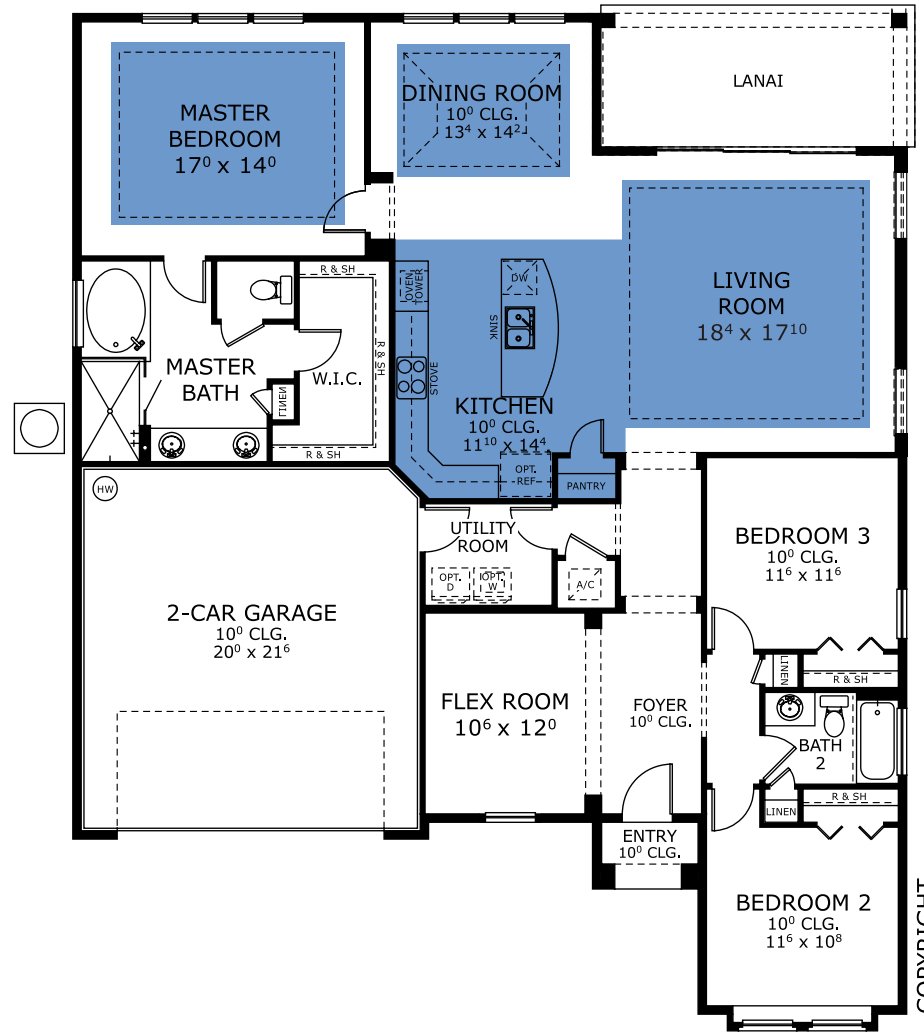
THE COASTAL



THE CRAFTSMAN



FIRST FLOOR



Customize this plan, it's easy! (844) 349-6401 or visit [ICIHomes.com](https://www.ICIHomes.com)

©1994-2026 ICI Homes™ is a registered trademark whose divisions operate under CBC1267313, CBC1262114, CBC1262120, CBC1264300, CBC1265743, CRC1333091, and CBC1257263. Features may be plan specific and vary. Please consult a Sales Associate for specific feature information. All new ICI Homes come with a HBW 2-10 warranty. Certain elevations may have additional fees. Prices may not include lot premiums, upgrades, and options. Inventory home completion date may vary. All prices subject to change without notice. All plans are property of ICI Homes and cannot be copied or used without permission. Prices, promotions, incentives, features, options, amenities, floor plans, elevations, site maps, designs, materials, and dimensions are for illustrative purposes only and subject to change without notice. Plans should not be relied upon as representation express or implied of final sizes, locations, features or dimensions. Square footage and dimensions are estimated and may vary from description. All HERS ratings and savings are calculated by a third party energy rating service. Actual savings will depend on a number of factors, including but not limited to daily activities, home maintenance practices, household size, use of appliances, lighting and internal climate control systems, lot orientation, and surrounding climate and weather conditions. Created on 06/23/2026: _____ Garage Orientation R / L: _____

