



THE MONACO at VOLUSIA/FLAGLER OFFSITE

THE MONACO - MEDITERRANEAN

4 Bedrooms • 4 Bathrooms • 4-Car Garage • 3,832 ft² Living Area • 5,411 ft² Under Roof

The Monaco floor plan combines elegance and function across 3,832 square feet, with four bedrooms, four baths, and a four-car garage. The open living space flows seamlessly from the kitchen with a hidden pantry and island, to the airy living room, and out to the 35' by 15' covered lanai. The master suite offers a private retreat with dual walk-in closets, a spa-like bath, and an adjacent exercise room. With customization options like a game room or wine closet, the Monaco can be tailored to fit your lifestyle, providing a luxurious space for any occasion.

* Renderings may vary from actual home. Please see disclaimer for more details.

\$1,723

ESTIMATED SAVINGS



This home has a HERS Score of 59 and is estimated to save you \$3,277 on your annual utility bills vs. a resale home.

THE MONACO

4 Bedrooms • 4 Bathrooms • 4-Car Garage

Volusia/Flagler

Offsite

Ormond Beach, FL

Available In

Volusia Flagler On Your Lot 2

Living Area: 3,832 ft² Under Roof: 5,411 ft²

THE PRAIRIE MODERN



THE WEST INDIES



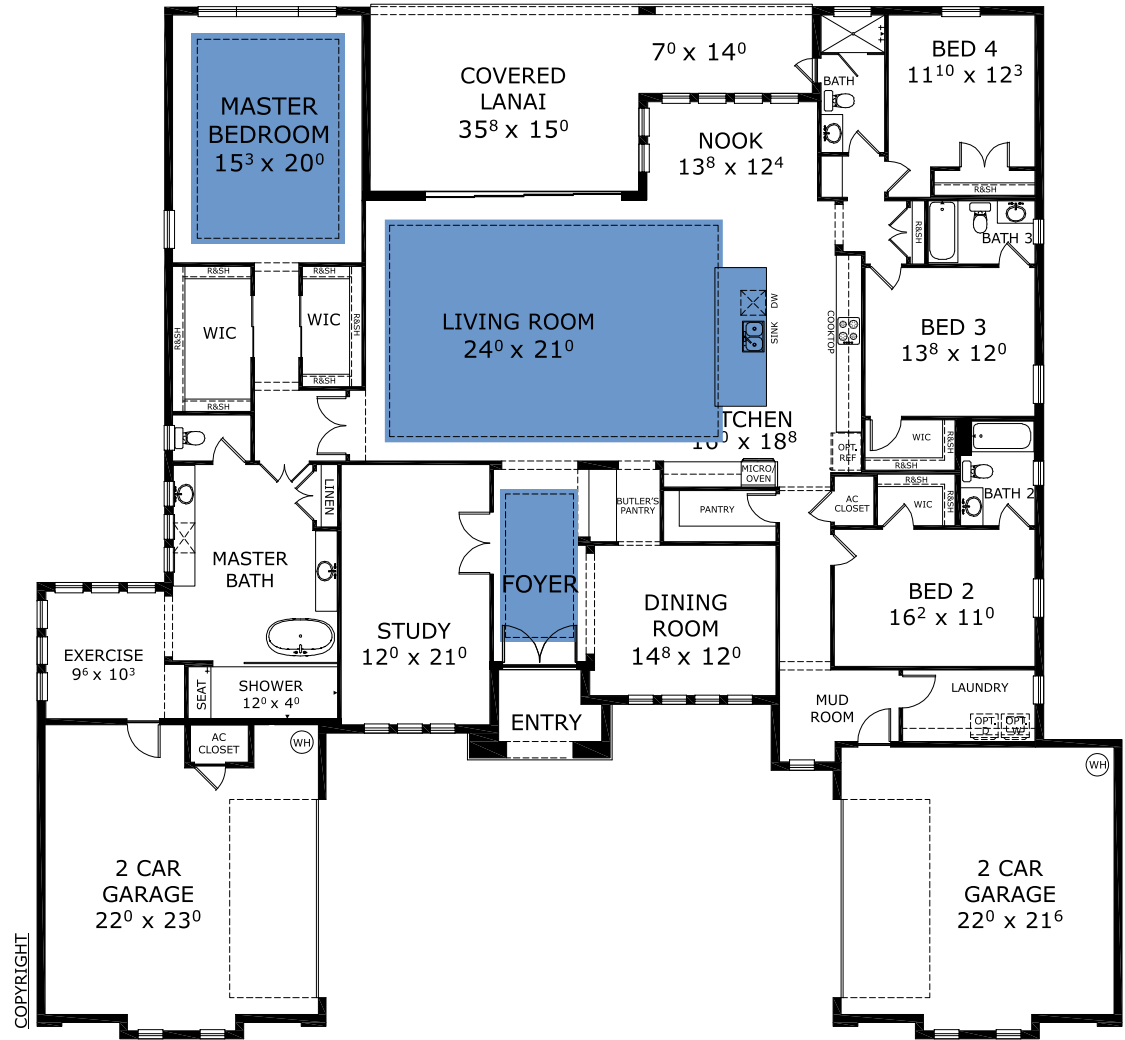
THE TUSCAN



THE MODERN II



FIRST FLOOR



Customize this plan, it's easy! (844) 349-6401 or visit ICIHomes.com

©1994-2026 ICI Homes™ is a registered trademark whose divisions operate under CBC1267313, CBC1262114, CBC1262120, CBC1264300, CBC1265743, CRC1333091, and CBC1257263. Features may be plan specific and vary. Please consult a Sales Associate for specific feature information. All new ICI Homes come with a HBW 2-10 warranty. Certain elevations may have additional fees. Prices may not include lot premiums, upgrades, and options. Inventory home completion date may vary. All prices subject to change without notice. All plans are property of ICI Homes and cannot be copied or used without permission. Prices, promotions, incentives, features, options, amenities, floor plans, elevations, site maps, designs, materials, and dimensions are for illustrative purposes only and subject to change without notice. Plans should not be relied upon as representation express or implied of final sizes, locations, features or dimensions. Square footage and dimensions are estimated and may vary from description. All HERS ratings and savings are calculated by a third party energy rating service. Actual savings will depend on a number of factors, including but not limited to daily activities, home maintenance practices, household size, use of appliances, lighting and internal climate control systems, lot orientation, and surrounding climate and weather conditions. Created on 06/23/2026: _____ Garage Orientation R / L: _____

