



## THE PACIFICA at WELLEN PARK

THE COASTAL

**4 Bedrooms • 3.5 Bathrooms • 3-Car Garage • 3,156 ft<sup>2</sup> Living Area • 3,914 ft<sup>2</sup> Under Roof**

The Pacifica is a stunning 3,156 square foot, two-story home offering four spacious bedrooms, three and a half bathrooms, and a unique two-car courtyard garage design. With an open-concept living area, a luxurious first-floor master suite, and an expansive upstairs game room, the Pacifica is the perfect blend of elegance, comfort, and functionality for today's modern lifestyle.

\* Renderings may vary from actual home. Please see disclaimer for more details.

**\$1,561**

**ESTIMATED SAVINGS**



This home has a HERS Score of 59 and is estimated to save you \$2,979 on your annual utility bills vs. a resale home.

# THE PACIFICA

4 Bedrooms • 3.5 Bathrooms • 3-Car Garage

Wellen Park  
Venice, FL

Available In  
Oakbend at Wellen Park 60

Living Area: 3,156 ft<sup>2</sup> Under Roof: 3,914 ft<sup>2</sup>

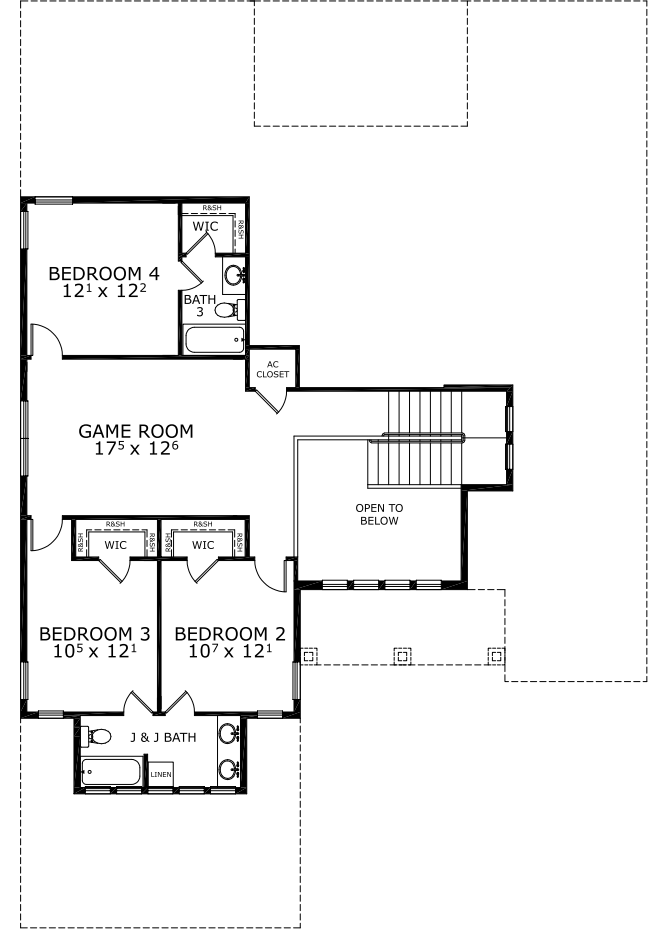
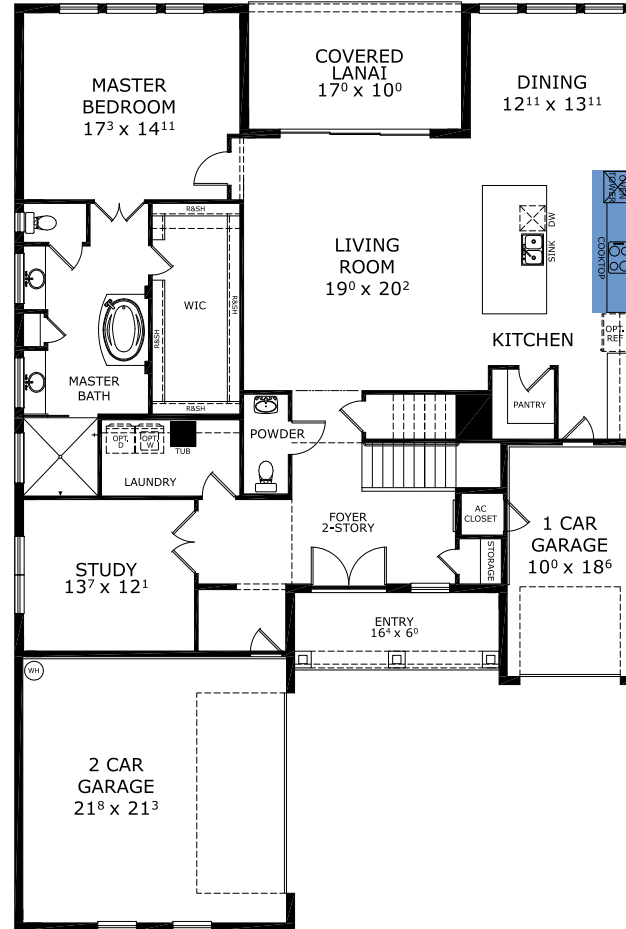
## THE MODERN



## THE WEST INDIES



## FIRST-SECOND FLOOR



Customize this plan, it's easy! (844) 349-6401 or visit [ICIHomes.com](https://www.ICIHomes.com)

©1994-2026 ICI Homes™ is a registered trademark whose divisions operate under CBC1267313, CBC1262114, CBC1262120, CBC1264300, CBC1265743, CRC1333091, and CBC1257263. Features may be plan specific and vary. Please consult a Sales Associate for specific feature information. All new ICI Homes come with a HBW 2-10 warranty. Certain elevations may have additional fees. Prices may not include lot premiums, upgrades, and options. Inventory home completion date may vary. All prices subject to change without notice. All plans are property of ICI Homes and cannot be copied or used without permission. Prices, promotions, incentives, features, options, amenities, floor plans, elevations, site maps, designs, materials, and dimensions are for illustrative purposes only and subject to change without notice. Plans should not be relied upon as representation express or implied of final sizes, locations, features or dimensions. Square footage and dimensions are estimated and may vary from description. All HERS ratings and savings are calculated by a third party energy rating service. Actual savings will depend on a number of factors, including but not limited to daily activities, home maintenance practices, household size, use of appliances, lighting and internal climate control systems, lot orientation, and surrounding climate and weather conditions. Created on 06/24/2026: \_\_\_\_\_ Garage Orientation R / L: \_\_\_\_\_

