



THE SOUTHBAY at WOODHAVEN

THE PRAIRIE MODERN

4 Bedrooms • 3 Bathrooms • 3-Car Garage • 2,881 ft² Living Area • 3,767 ft² Under Roof

The South Bay is a spacious and versatile home designed for modern living. Featuring four bedrooms, three baths, a large flex room, and an open-concept kitchen, living, and dining area, this floor plan provides comfort and convenience for families of all sizes. The covered lanai extends the living space outdoors, while the luxurious master suite offers a private retreat with a large walk-in closet and spa-like bath. A three-car garage completes this thoughtfully designed home, perfect for those seeking elegance and functionality.

* Renderings may vary from actual home. Please see disclaimer for more details.

\$1,342

ESTIMATED SAVINGS



This home has a HERS Score of 64 and is estimated to save you \$2,878 on your annual utility bills vs. a resale home.

THE SOUTH BAY

4 Bedrooms • 3 Bathrooms • 3-Car Garage

Woodhaven
Port Orange, FL

Available In
Woodhaven 60

Living Area: 2,881 ft² **Under Roof:** 3,767 ft²

THE WEST INDIES



THE COASTAL



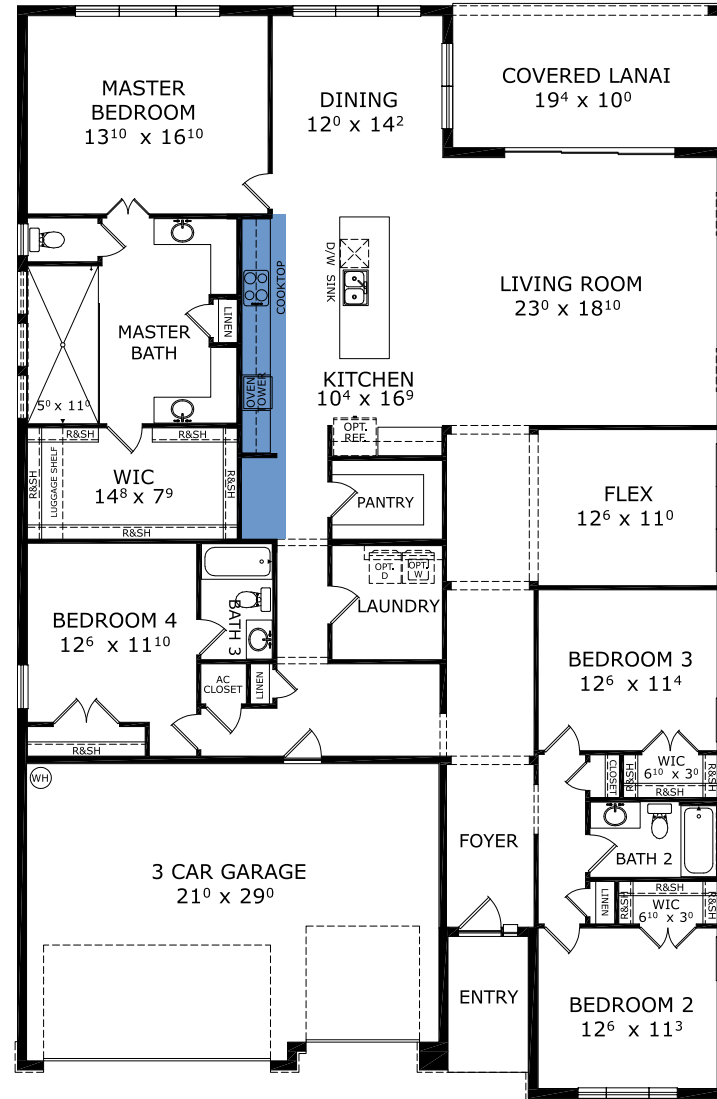
THE FARMHOUSE



THE CRAFTSMAN



FIRST FLOOR



Customize this plan, it's easy! (844) 349-6401 or visit ICIHomes.com

©1994-2026 ICI Homes™ is a registered trademark whose divisions operate under CBC1267313, CBC1262114, CBC1262120, CBC1264300, CBC1265743, CRC1333091, and CBC1257263. Features may be plan specific and vary. Please consult a Sales Associate for specific feature information. All new ICI Homes come with a HBW 2-10 warranty. Certain elevations may have additional fees. Prices may not include lot premiums, upgrades, and options. Inventory home completion date may vary. All prices subject to change without notice. All plans are property of ICI Homes and cannot be copied or used without permission. Prices, promotions, incentives, features, options, amenities, floor plans, elevations, site maps, designs, materials, and dimensions are for illustrative purposes only and subject to change without notice. Plans should not be relied upon as representation express or implied of final sizes, locations, features or dimensions. Square footage and dimensions are estimated and may vary from description. All HERS ratings and savings are calculated by a third party energy rating service. Actual savings will depend on a number of factors, including but not limited to daily activities, home maintenance practices, household size, use of appliances, lighting and internal climate control systems, lot orientation, and surrounding climate and weather conditions. Created on 06/24/2026: Garage Orientation R / L: _____

