



THE SEA LA VIE at VOLUSIA/FLAGLER OFFSITE

THE CARIBBEAN MODERN

4 Bedrooms • 4 Bathrooms • 2-Car Garage • 3,488 ft² Living Area • 4,359 ft² Under Roof

Sea La Vie is a stunning three-story coastal home featuring 4 bedrooms, 4 baths, a game room, and a 3-car tandem garage—complete with front and rear balconies on the second and third floors for ultimate indoor-outdoor living.

* Renderings may vary from actual home. Please see disclaimer for more details.

\$1,866

ESTIMATED SAVINGS



This home has a HERS Score of 62 and is estimated to save you \$3,680 on your annual utility bills vs. a resale home.

THE SEA LA VIE

4 Bedrooms • 4 Bathrooms • 2-Car Garage

Volusia/Flagler

Offsite

Ormond Beach, FL

Available In

Volusia Flagler On Your Lot

Living Area: 3,488 ft² Under Roof: 4,359 ft²

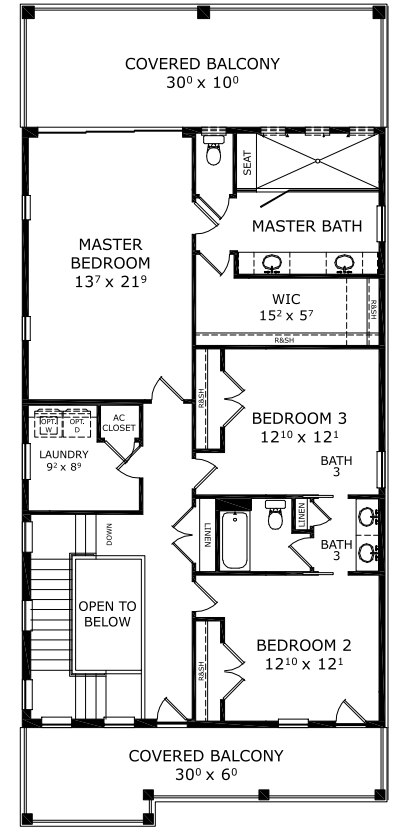
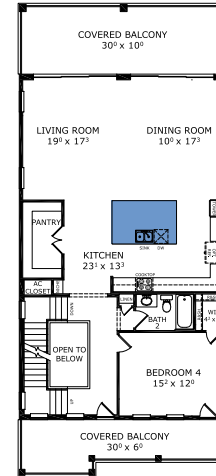
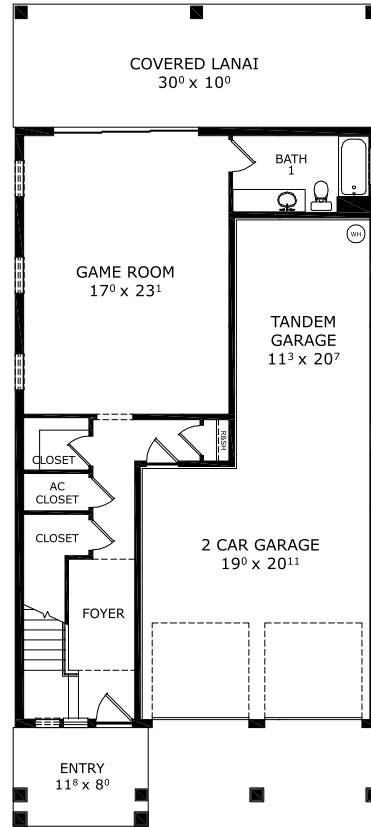
THE MEDITERRANEAN



THE COASTAL MODERN



FIRST-THIRD FLOOR



Customize this plan, it's easy! (844) 349-6401 or visit [ICIHomes.com](https://www.ICIHomes.com)

©1994-2026 ICI Homes™ is a registered trademark whose divisions operate under CBC1267313, CBC1262114, CBC1262120, CBC1264300, CBC1265743, CRC1333091, and CBC1257263. Features may be plan specific and vary. Please consult a Sales Associate for specific feature information. All new ICI Homes come with a HBW 2-10 warranty. Certain elevations may have additional fees. Prices may not include lot premiums, upgrades, and options. Inventory home completion date may vary. All prices subject to change without notice. All plans are property of ICI Homes and cannot be copied or used without permission. Prices, promotions, incentives, features, options, amenities, floor plans, elevations, site maps, designs, materials, and dimensions are for illustrative purposes only and subject to change without notice. Plans should not be relied upon as representation express or implied of final sizes, locations, features or dimensions. Square footage and dimensions are estimated and may vary from description. All HERS ratings and savings are calculated by a third party energy rating service. Actual savings will depend on a number of factors, including but not limited to daily activities, home maintenance practices, household size, use of appliances, lighting and internal climate control systems, lot orientation, and surrounding climate and weather conditions. Created on 06/24/2026: _____ Garage Orientation R / L: _____

