



THE ST. THOMAS at GLEN KERNAN

THE WEST INDIES

5 Bedrooms • 4.5 Bathrooms • 3-Car Garage • 4,665 ft² Living Area • 6,027 ft² Under Roof

The St. Thomas is a grand two-story estate home designed for elevated Florida living, offering over 6,500 square feet of beautifully planned space. With 5 bedrooms, expansive indoor-outdoor living areas, dual balconies, and flexible entertaining spaces, this luxury floor plan combines impressive design with the ability to personalize it around your lifestyle.

* Renderings may vary from actual home. Please see disclaimer for more details.

\$2,015

ESTIMATED SAVINGS



This home has a HERS Score of 72 and is estimated to save you \$4,731 on your annual utility bills vs. a resale home.

THE ST. THOMAS

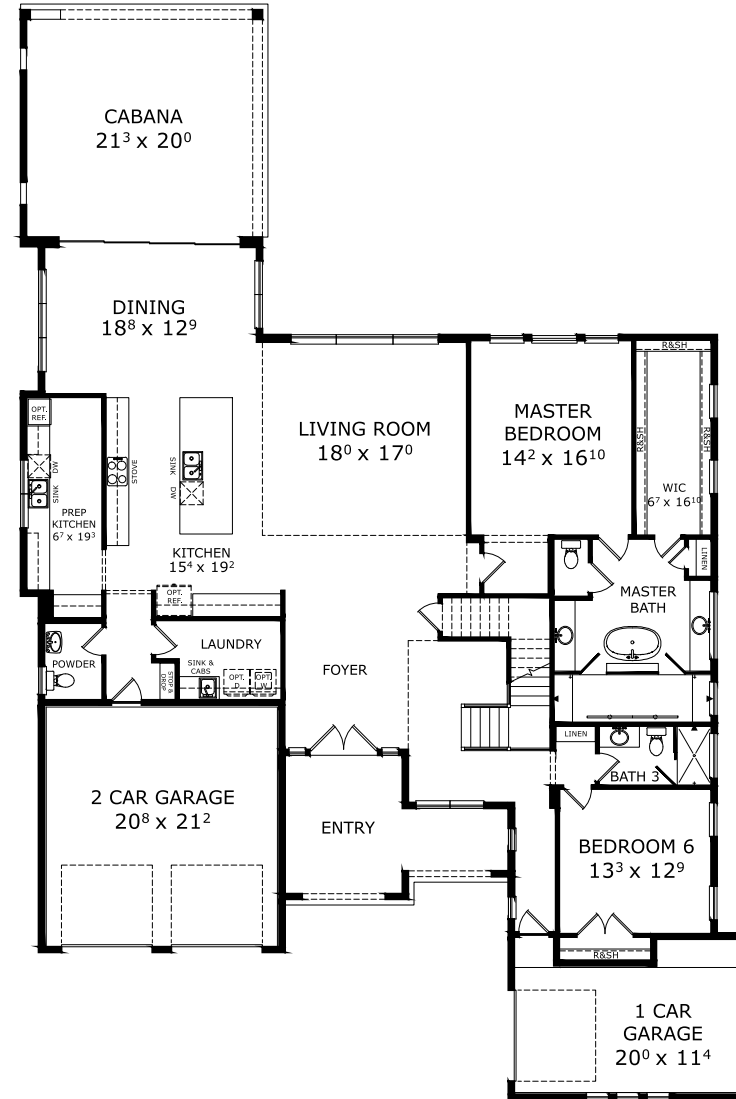
5 Bedrooms • 4.5 Bathrooms • 3-Car Garage

Glen Kernan
Jacksonville, FL

Available In
Glen Kernan

Living Area: 4,665 ft² Under Roof: 6,027 ft²

FIRST FLOOR



Customize this plan, it's easy! (844) 349-6401 or visit [ICIHomes.com](https://www.ICIHomes.com)

©1994-2026 ICI Homes™ is a registered trademark whose divisions operate under CBC1267313, CBC1262114, CBC1262120, CBC1264300, CBC1265743, CRC1333091, and CBC1257263. Features may be plan specific and vary. Please consult a Sales Associate for specific feature information. All new ICI Homes come with a HBW 2-10 warranty. Certain elevations may have additional fees. Prices may not include lot premiums, upgrades, and options. Inventory home completion date may vary. All prices subject to change without notice. All plans are property of ICI Homes and cannot be copied or used without permission. Prices, promotions, incentives, features, options, amenities, floor plans, elevations, site maps, designs, materials, and dimensions are for illustrative purposes only and subject to change without notice. Plans should not be relied upon as representation express or implied of final sizes, locations, features or dimensions. Square footage and dimensions are estimated and may vary from description. All HERS ratings and savings are calculated by a third party energy rating service. Actual savings will depend on a number of factors, including but not limited to daily activities, home maintenance practices, household size, use of appliances, lighting and internal climate control systems, lot orientation, and surrounding climate and weather conditions. Created on 06/24/2026: _____ Garage Orientation R / L: _____



THE ST. THOMAS

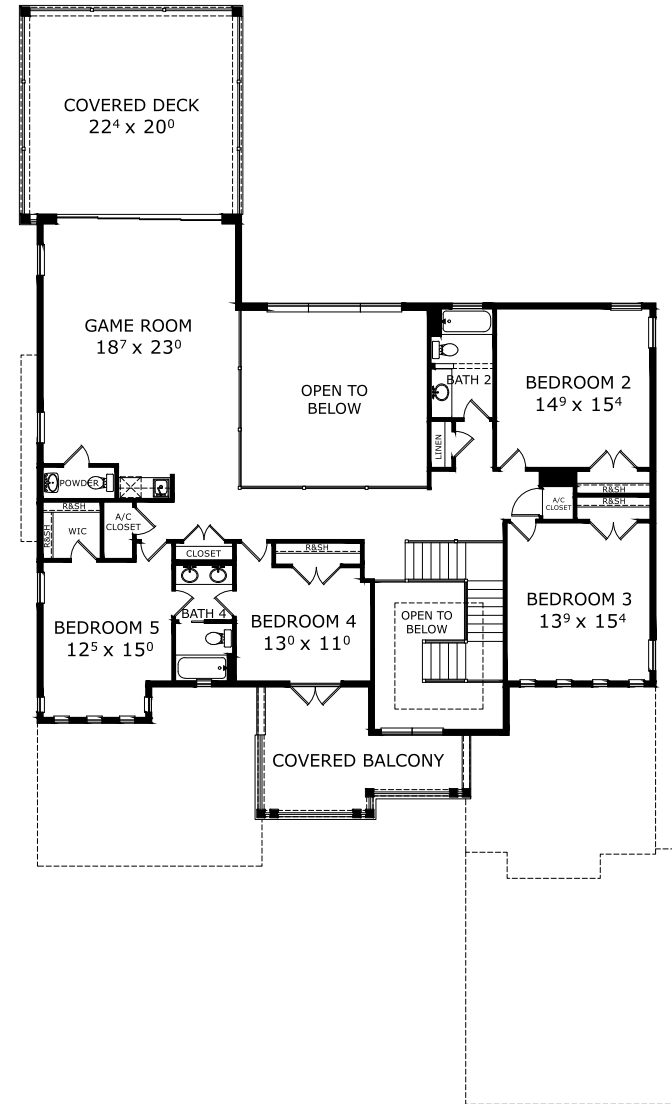
5 Bedrooms • 4.5 Bathrooms • 3-Car Garage

Glen Kernan
Jacksonville, FL

Available In
Glen Kernan

Living Area: 4,665 ft² Under Roof: 6,027 ft²

SECOND FLOOR



Customize this plan, it's easy! (844) 349-6401 or visit [ICIHomes.com](https://www.ICIHomes.com)

©1994-2026 ICI Homes™ is a registered trademark whose divisions operate under CBC1267313, CBC1262114, CBC1262120, CBC1264300, CBC1265743, CRC1333091, and CBC1257263. Features may be plan specific and vary. Please consult a Sales Associate for specific feature information. All new ICI Homes come with a HBW 2-10 warranty. Certain elevations may have additional fees. Prices may not include lot premiums, upgrades, and options. Inventory home completion date may vary. All prices subject to change without notice. All plans are property of ICI Homes and cannot be copied or used without permission. Prices, promotions, incentives, features, options, amenities, floor plans, elevations, site maps, designs, materials, and dimensions are for illustrative purposes only and subject to change without notice. Plans should not be relied upon as representation express or implied of final sizes, locations, features or dimensions. Square footage and dimensions are estimated and may vary from description. All HERS ratings and savings are calculated by a third party energy rating service. Actual savings will depend on a number of factors, including but not limited to daily activities, home maintenance practices, household size, use of appliances, lighting and internal climate control systems, lot orientation, and surrounding climate and weather conditions. Created on 06/24/2026: _____ Garage Orientation R / L: _____

