



THE TALBOT at SEVEN PINES

THE TALBOT - CRAFTSMAN

QUICK MOVE IN

3 Bedrooms • 2.5 Bathrooms • 2-Car Garage • 2,010 ft² Living Area • 2,783 ft² Under Roof

The Talbot is a thoughtfully crafted two-story home with 2,010 square feet of stylish living space, offering three bedrooms, two and a half baths, and endless customization options. The first floor's open-concept layout includes a flex room, spacious kitchen, dining area, and a cozy living room that opens to a covered lanai, perfect for indoor-outdoor living. Upstairs, the master suite offers a private retreat with a walk-in closet and luxurious bath, while two additional bedrooms and a conveniently located laundry room enhance daily living.

* Renderings may vary from actual home. Please see disclaimer for more details.

\$1,135

ESTIMATED SAVINGS



This home has a HERS Score of 58 and is estimated to save you \$2,336 on your annual utility bills vs. a resale home.

THE TALBOT

3 Bedrooms • 2.5 Bathrooms • 2-Car Garage

QUICK MOVE IN

Seven Pines

Heritage Series | 40' Wide Lots | Rear Load - Lot 006

12170 Grand Pine Drive
Jacksonville, FL, 32224

Living Area: 2,010 ft²

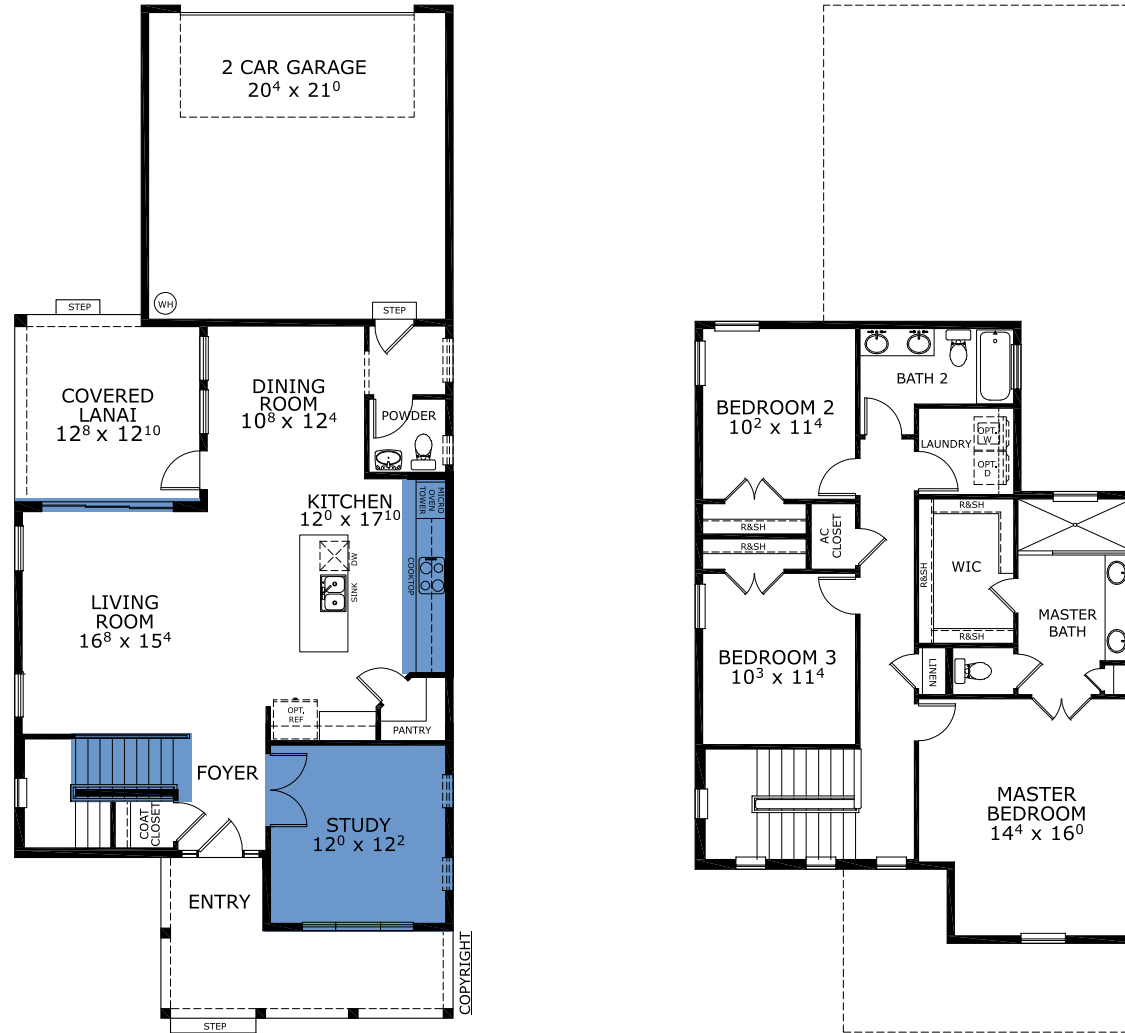
Structural Options Included in This Home:

- ✓ Kitchen Deluxe - NFD
- ✓ Study ilo Flex Room
- ✓ Sliding Glass Door 9 x 8
- ✓ Outlet-Floor Plug Brass
- ✓ Wood Railing @ Stairs
- ✓ Delete Luggage Shelf.
- ✓ Wing Walls at kitchen Island.
- ✓ Stackable Washer and Dryer
- ✓ No knee wall at stairs. Square Painted white spindles added at Sales.
- ✓ 6 Tall Lanai Wall added in the Plan.

And much more....

Priced at: \$698,900

FIRST-SECOND FLOOR



This Talbot is a Quick Move In! [Speak to a Sales Counselor \(844\) 349-6401](https://www.icihomes.com) or visit [ICIHomes.com](https://www.icihomes.com)

©1994-2026 ICI Homes™ is a registered trademark whose divisions operate under CBC1267313, CBC1262114, CBC1262120, CBC1264300, CBC1265743, CRC1333091, and CBC1257263. Features may be plan specific and vary. Please consult a Sales Associate for specific feature information. All new ICI Homes come with a HBW 2-10 warranty. Certain elevations may have additional fees. Prices may not include lot premiums, upgrades, and options. Inventory home completion date may vary. All prices subject to change without notice. All plans are property of ICI Homes and cannot be copied or used without permission. Prices, promotions, incentives, features, options, amenities, floor plans, elevations, site maps, designs, materials, and dimensions are for illustrative purposes only and subject to change without notice. Plans should not be relied upon as representation express or implied of final sizes, locations, features or dimensions. Square footage and dimensions are estimated and may vary from description. All HERS ratings and savings are calculated by a third party energy rating service. Actual savings will depend on a number of factors, including but not limited to daily activities, home maintenance practices, household size, use of appliances, lighting and internal climate control systems, lot orientation, and surrounding climate and weather conditions. Created on 06/23/2026: Garage Orientation R / L: _____

